

**CF**  
Series

*Indexable Copy Milling*

仿形銑削系列

*Suitable for mould & die machining and steel profiling !!*

適用於模具加工與一般鋼成形加工 !!



● **CF21 Series :**

**Copy milling for medium & finishing**

適合精加工與中加工

**WP32 Inserts : 6R, 8R, 10R, 12.5R & 16R**

WP32 刀片尺寸 : 6R, 8R, 10R, 12.5R & 16R

● **CF22 Series :**

**Copy milling for roughing**

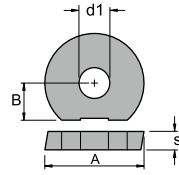
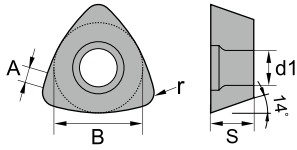
適合粗加工

**WP26 Inserts : 14R & 25R**

WP26 刀片尺寸 : 14R & 25R

W190902EC

## Insert Specification 刀片規格



Insert 刀片	Dimensions (mm)				
	A	B	S	r	d1
WP26339R14	-	9.52	3.97	1.2	4.4
WP26379R25	1.1	13	5.56	2.0	5.5

Insert 刀片	Dimensions (mm)				
	A	B	S	r	d1
WP3212	12	6	2.5	-	5
WP3216	16	6	3	-	5
WP3220	20	6	3	-	5
WP3225	25	9	4	-	6
WP3232	32	10	5	-	8

## Insert Geometry 刀片幾何

Shape 形狀	Chipbreaker 斷屑槽	Application 特性
WP32..	<b>SM</b>	New geometry design for finishing cutting in hardened steel and difficult-to-cut material. 全新的刀口設計，適用於硬化鋼及難切削材的精加工應用
WP32..	<b>SG</b>	Sharp geometry design for finishing cutting in steel, stainless steel and cast iron. 鋒利的刀口設計，適用於鋼件、不鏽鋼，及鑄鐵的精加工應用
WP32..	<b>MM</b>	New geometry design for medium cutting in hardened steel and difficult-to-cut material. 全新的刀口設計，適用於硬化鋼及難切削材的中加工應用
WP32..	<b>MG</b>	Low cutting force for medium cutting in steel, stainless steel and cast iron. 低切削阻力的刀口設計，適用於鋼件、不鏽鋼、鑄鐵的中加工應用
WP26..	<b>RG</b>	Strong geometry design for rough cutting in steel, alloy steel and hardened steel. 強壯的刀口設計，適用於鋼件、合金鋼、預應鋼的粗加工應用

## Insert Grade 刀片材質等級

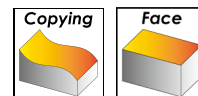
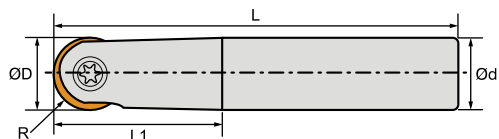
Grade Type 材質類別	Machining Application 加工特性	Industry area 產業應用範圍
<b>CX12HS</b>	<ul style="list-style-type: none"> <li>Continuous finishing machining 適用於連續穩定精加工</li> <li>For Hardened steel 適合高硬度鋼銑削</li> </ul>	<ul style="list-style-type: none"> <li>Die and mould 模具產業</li> <li>Hardened parts 硬質零件</li> </ul>
<b>CX22HS</b>	<ul style="list-style-type: none"> <li>Continuous semi-finishing machining 適用於連續穩定輕加工</li> <li>For Hardened steel and Cast Iron 適合高硬度鋼和鑄鐵銑削</li> </ul>	<ul style="list-style-type: none"> <li>Die and mould 模具產業</li> <li>Hardened parts 硬質零件</li> </ul>
<b>CX32HS</b>	<ul style="list-style-type: none"> <li>Medium machining 適用於中加工</li> <li>For Carbon steel, Alloy steel and Stainless steel 適合碳鋼，合金鋼和不鏽鋼銑削</li> </ul>	<ul style="list-style-type: none"> <li>Auto parts 汽車零件</li> <li>Machinery parts 機械零件</li> </ul>
<b>CX52HS</b>	<ul style="list-style-type: none"> <li>Roughing or interrupted machining 適用於粗加工或斷續加工</li> <li>For Stainless steel and Difficult-to-cut material 適合不鏽鋼和難加工材銑削</li> </ul>	<ul style="list-style-type: none"> <li>Auto and Machinery parts 汽車和機械零件</li> <li>Aircraft parts 航太零件</li> </ul>

※ Different grades for various applications are available to select, please contact us for more information.  
針對不同的加工應用，本公司提供不同的材質等級供選擇。如果您有需要，請與我們連繫。

## Order Code 刀片訂購碼

Insert 刀片	Order No. 訂購編碼	Designation 名稱	Working Material					
			P	M	K	N	S	H
	IWP26314RG22HS	WP26339R14-RG-CX22HS	●	○	●		○	●
	IWP26314RG32HS	WP26339R14-RG-CX32HS	●	●	●		○	○
	IWP26725RG22HS	WP26379R25-RG-CX22HS	●	○	●		○	●
	IWP26725RG32HS	WP26379R25-RG-CX32HS	●	●	●		○	○
	IWP26725RG52HS	WP26379R25-RG-CX52HS	●	●			●	
	IWP3212SM12HS	WP3212-SM-CX12HS	○	○	○		○	●
	IWP3212SM22HS	WP3212-SM-CX22HS	●	○	●		○	●
	IWP3216SM12HS	WP3216-SM-CX12HS	○	○	○		○	●
	IWP3216SM22HS	WP3216-SM-CX22HS	●	○	●		○	●
	IWP3220SM12HS	WP3220-SM-CX12HS	○	○	○		○	●
	IWP3220SM22HS	WP3220-SM-CX22HS	●	○	●		○	●
	IWP3225SM12HS	WP3225-SM-CX12HS	○	○	○		○	●
	IWP3225SM22HS	WP3225-SM-CX22HS	●	○	●		○	●
	IWP3232SM22HS	WP3232-SM-CX22HS	●	○	●		○	●
	IWP3212SG22HS	WP3212-SG-CX22HS	●	○	●		○	●
	IWP3216SG22HS	WP3216-SG-CX22HS	●	○	●		○	●
	IWP3220SG22HS	WP3220-SG-CX22HS	●	○	●		○	●
	IWP3225SG22HS	WP3225-SG-CX22HS	●	○	●		○	●
	IWP3212MM22HS	WP3212-MM-CX22HS	●	○	●		○	●
	IWP3216MM22HS	WP3216-MM-CX22HS	●	○	●		○	●
	IWP3220MM22HS	WP3220-MM-CX22HS	●	○	●		○	●
	IWP3225MM22HS	WP3225-MM-CX22HS	●	○	●		○	●
	IWP3232MM22HS	WP3232-MM-CX22HS	●	○	●		○	●
	IWP3212MG22HS	WP3212-MG-CX22HS	●	○	●		○	●
	IWP3216MG22HS	WP3216-MG-CX22HS	●	○	●		○	●
	IWP3220MG22HS	WP3220-MG-CX22HS	●	○	●		○	●
	IWP3225MG22HS	WP3225-MG-CX22HS	●	○	●		○	●

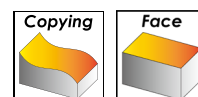
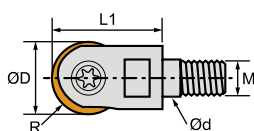
## CF21 - End mill tools



Order No.	R	D	L1	L	d	T	Inserts	Screw	Wrench
ICF21E302012150	6R	12	32	150	12	2	WP3212 ..	MGR5012	TK20
ICF21E302012200	6R	12	58	200	16	2			
ICF21E302016150	8R	16	36	150	16	2	WP3216..	MGR5016	TK20
ICF21E302016200	8R	16	36	200	16	2			
ICF21E302016201	8R	16	65	200	20	2			
ICF21E302020150	10R	20	45	150	20	2	WP3220..	MGR5020	TK20
ICF21E302020200	10R	20	45	200	20	2			
ICF21E302020201	10R	20	76	200	25	2			
ICF21E302020250	10R	20	76	250	25	2			
ICF21E302025200	12.5R	25	45	200	25	2	WP3225..	MGR6025	TK30
ICF21E302025250	12.5R	25	45	250	25	2			
ICF21E302025201	12.5R	25	98	200	32	2			
ICF21E302025251	12.5R	25	98	250	32	2			
ICF21E302025300	12.5R	25	98	300	32	2			
ICF21E302032200	16R	32	50	200	32	2	WP3232..	MGR8030	TK30
ICF21E302032250	16R	32	50	250	32	2			
ICF21E302032300	16R	32	50	300	32	2			

Customize available.

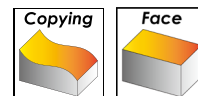
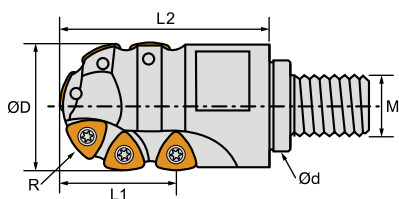
## CF21 - Modular tools



Order No.	R	D	L1	d	M	T	Inserts	Screw	Wrench
ICF21M302012060	6R	12	22	6.5	M6	2	WP3212 ..	MGR5012	TK20
ICF21M302012080	6R	12	30	8.5	M8	2			
ICF21M302016080	8R	16	28	8.5	M8	2	WP3216 ..	MGR5016	TK20
ICF21M302020100	10R	20	30	10.5	M10	2	WP3220 ..	MGR5020	TK20
ICF21M302025120	12.5R	25	40	12.5	M12	2	WP3225 ..	MGR6025	TK30
ICF21M302032160	16R	32	43	17	M16	2	WP3232 ..	MGR8030	TK30

Customize available.

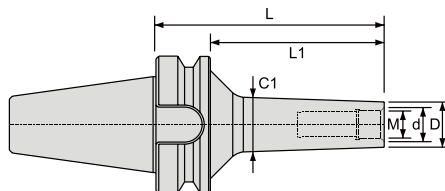
## CF22 - Modular tools



Order No.	R	D	L1	L2	d	M	T	Inserts	Screw	Wrench
ICF22M202025120	12.5R	25	21	42	23	M12	2	WP26339R14	TS4023	TK15
ICF22M202030120	15R	30	23	50	23	M12	2			
ICF22M202032160	16R	32	23	50	23	M16	2			
ICF22M202040180	20R	40	38	65	26	M18	2	WP26379R25	TS5007	TK20
ICF22M202050250	25R	50	45	80	36	M25	2			

Customize available.

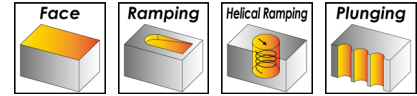
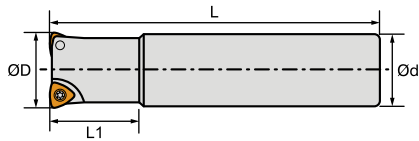
## BT40DM - Replaceable Integrated Shank



Order No.	d	L	L1	D	C1	M
IBT40DM08050	8.5	50	23	13	15	M8
IBT40DM10057	10.5	57	30	18	21	M10
IBT40DM12080	12.5	80	53	21	25	M12

Customize available.

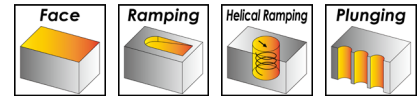
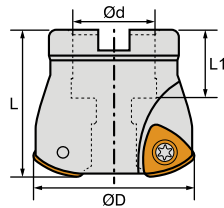
## CF23 - End mill tools



Order No.	D	L1	L	d	T	Inserts	Screw	Wrench
ICF23E203032150	32	28	150	32	3	WP26339R14	TS4005	TK15
ICF23E203035180	35	40	180	32	3			
ICF23E203035230	35	40	230	32	3			
ICF23E204040200	40	40	200	32	4	WP26379R25	TS5002	TK20
ICF23E202040200	40	45	200	32	2			
ICF23E203050200	50	45	200	32	3			

Customize available.

## CF23 - Face mill tools



Order No.	D	L1	L	d	T	Inserts	Screw	Wrench
ICF23F203050220	50	21	50	22	3	WP26379R25	TS5002	TK20
ICF23F204063220	63	21	50	22	4			
ICF23F205080270	80	23	50	27	5			
ICF23F206100320	100	26	50	32	6			
ICF23F207125400	125	38	63	40	7			
ICF23F208160400	160	38	63	40	8			

Customize available.